



MICROPHONES • HEADPHONES
DISTRIBUTED BY
NORTH AMERICAN PHILIPS COMPANY, INC.
100 EAST 42nd STREET, NEW YORK, NEW YORK 10017

CARDIOID Dynamic Microphones

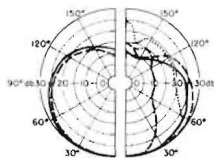
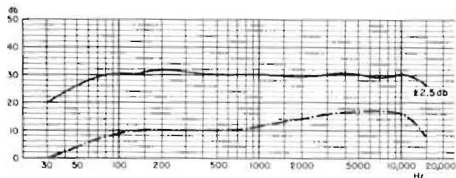


D-1000E/D-1000TS



TECHNICAL DATA

Frequency response	40-16,000 Hz \pm 3 db
Sensitivity	-53 db (re 1 mW/10 dynes/cm ²)
Impedance	D-1000E, 200 ohms. D-1000TS, high
Directional characteristics	Cardioid
Mode selection switch	B = Bass, M = Medium, S = Sharp
Dimensions	6" x 1 7/16"
Weight	9 1/2 oz.



Legend for frequency response curves:
 --- 125 Hz
 --- 250 Hz
 --- 500 Hz
 --- 1000 Hz
 --- 2000 Hz
 --- 4000 Hz
 --- 8000 Hz
 --- 16,000 Hz

ACCESSORIES

MSH-58E	Flexible shaft
SA-10/3	Stand adapter (around connector)
MK	Cable series
AKG	Standard and anti-shock stands

*B-M-S MODE SWITCH POSITIONS



B = Bass: Normal, smooth frequency response. Emphasized low frequency response when close-talked.

M = Medium: Permits close-talking for normal sound without booming or bass accentuation. Emphasized middles and highs at greater working distance.

S = Sharp: High pitch sensation by added, upper mid-range brilliance and de-emphasized bass.

The combination of mode switch positions and varying pickup distances enables a variety of effects.

DESCRIPTION

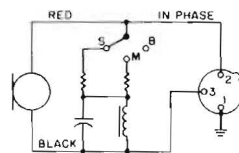
New AKG D-1000 Series microphones are specially designed for the performing artist. A built-in, exclusive AKG mode switch provides creative control at the microphone for professional projection of a personalized sound. Performing singles or groups, vocal or instrumental can adapt Series D-1000's special frequency response effects to any type of music from ballad to beat. Recessed for easy mode selection without accidental operation, the three position B-M-S* switch functions as a unique mood and environmental sound control.

The effective cardioid (one direction) sensitivity keeps sound personal and rejects unwanted rear noise from the audience. The close-working pick up pattern minimizes re-amplification of instrument loudspeaker sound through the vocal reinforcement system. Feedback squeal is suppressed when the microphones must be used close to loudspeakers or in an acoustically unfavorable area.

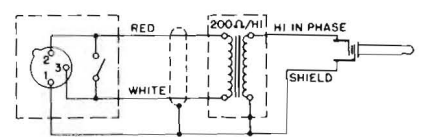
The special non-metallic MAKROFOL diaphragm of D-1000 Series withstands high sound pressures, and a sintered bronze cap filters breath noises and controls pop while protecting the system from dirt and moisture. AKG D-1000 Series are extremely rugged. The system is shock-mounted to minimize handling noise. The attractive and practical fit-to-the hand design is enhanced by a non-glare, silver-gray satin finish. They are supplied complete with 15' cable, necessary connector(s), quick-remove stand adapter and case.

CONNECTION DIAGRAMS

D-1000E



MK-7/TS-5



D-1000TS The D-1000TS (Transformer/Switch) may be ordered for high impedance and on-off switch operation. Package includes D-1000E with stand adapter and case plus MK-7/TS-5 cable assembly consisting of 3-pin microphone mating connector with built-in on-off switch, 15' cable, high impedance transformer and phone plug for amplifier input.

